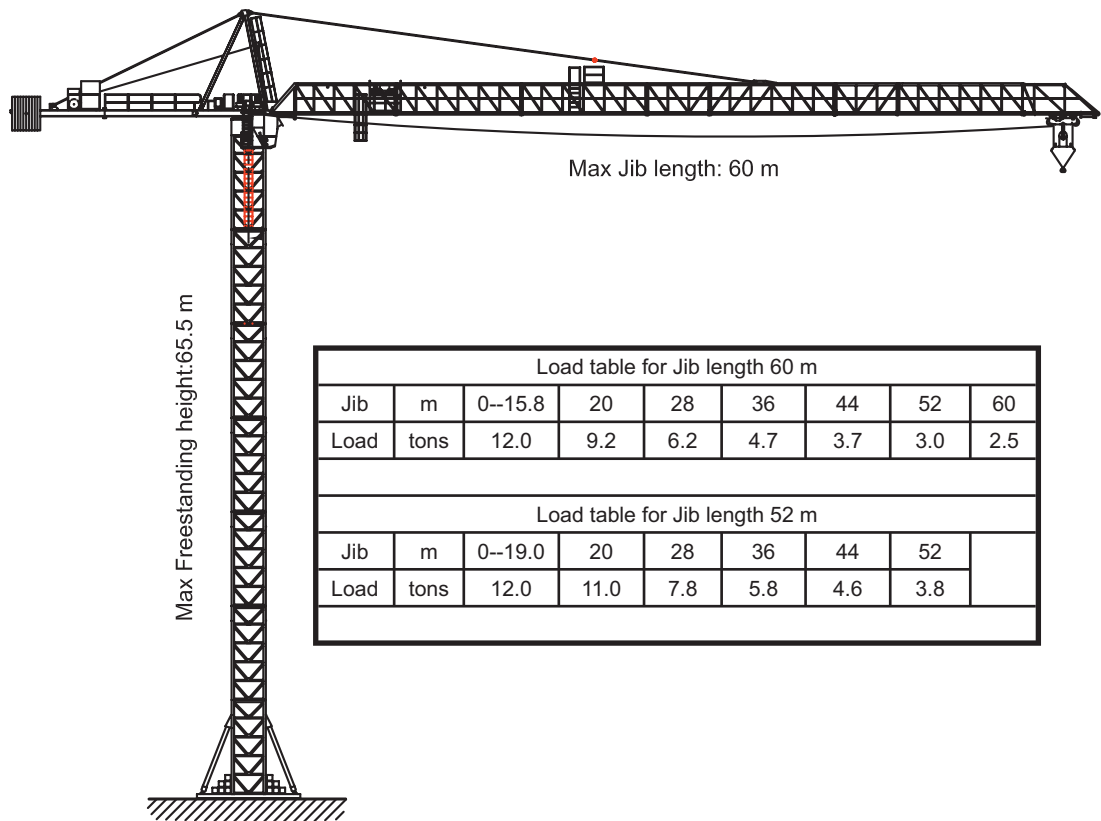


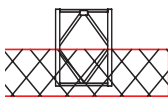
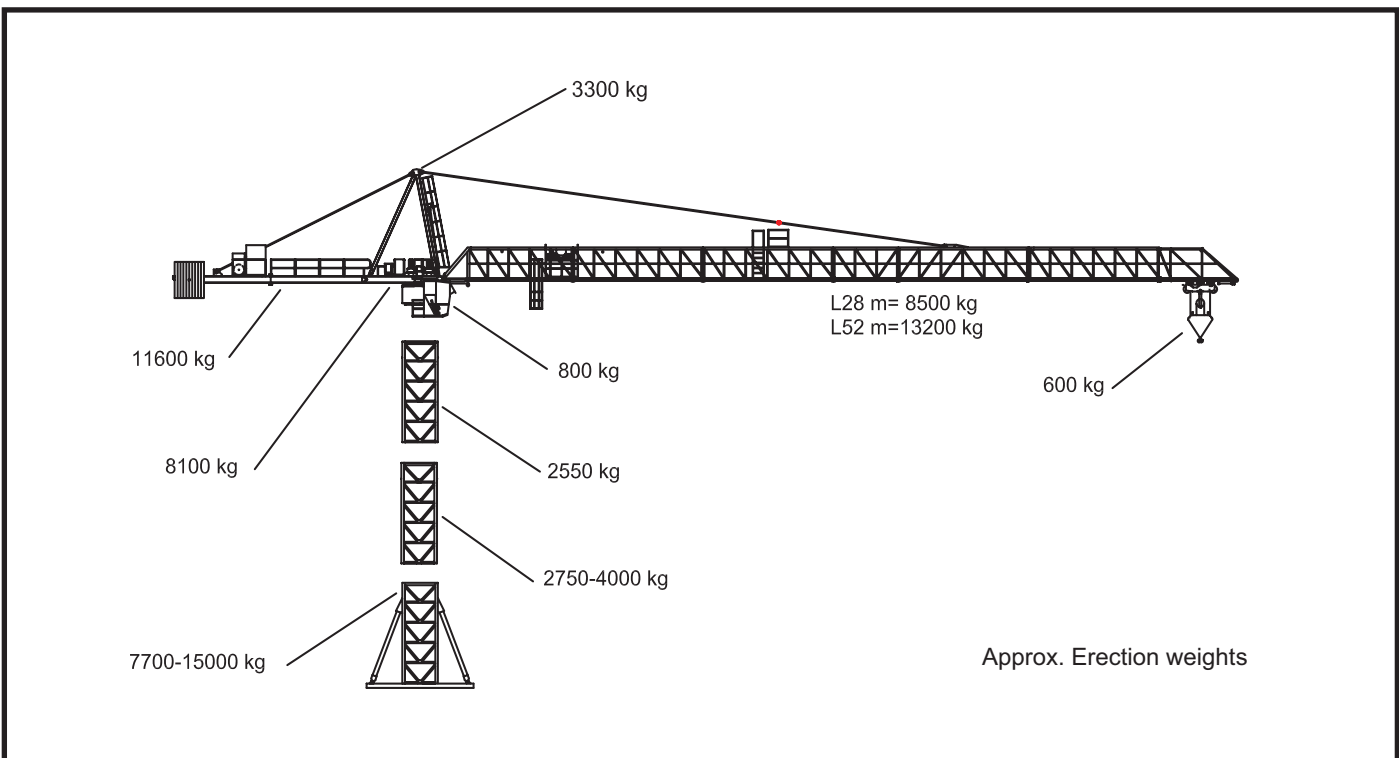


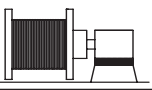


# KROLL TOWER CRANE K250D

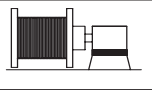



TRADEHOUSE Int. A/S  
 Poppelgaardvej 7, DK 2860 Soborg  
 Tel: +45 3966 1866, Fax: +45 3966 1065  
 mail: lohmann@tradehouse.dk  
 www.tradehouse.dk

Kroll Tower Cranes K250 D													
Hook height		m	65.5	59.5	53.5	47.5	41.5	35.5	29.5	23.5	17.5	11.5	
	Erected on bottom cross for rail travelling												
	Gauge	m	9	9	6	6	6	6	6	6	6	6	
	Ballast	ton	40	40	75	65	60	45	40	40	40	40	
	Corner pressure	In Service	kN	845	780	1030	915	820	730	665	600	550	550
	Corner pressure	Out of Service	kN	1010	1010	1200	Less than in Service						
	Erected on bottom cross on foundation plate												
	B x B x H												
	B	m	9	8,5	7.75	7	6.25	6.25	6.25	6.25	6.25	6.25	
	H	m	0.8	0.8	0.8	0.8	0.8	0.8	0.8	0.8	0.8	0.8	
Foundation weight	ton	153	136	113	93	74	74	74	74	74	74		
	Erected on cast in section												
	B x B x H												
	Hook height	m	59.5	53.5	47.5	41.5	35.5	29.5	23.5	17.7	11.5	X	
	B	m	7.75	7.25	6.75	6	5.75	5.75	5.5	5.5	5.25		
	H	m	0.8	0.8	0.8	0.8	0.8	0.8	0.8	0.8	0.8		
Foundation weight	ton	198	173	150	119	109	109	100	100	82			



Hoisting Speeds		
	50 HP	75 HP
	0-4000 kg	0-4000 kg
	0.2-44 m/min	0.2-62 m/min
	0-8000 kg	0-8000 kg
	0.1-22 m/min	0.1-31 m/min

Hoisting Speeds		
	50 HP	75 HP
	0-12000 kg	0-12000 kg
	0.05-15 m/min	0.05-33 m/min