

CRANE OPERATOR HOIST



TRADEHOUSE Int. A/S
Poppelgaardvej 7, DK 2860 Soborg
Tel: +45 3966 1866, Fax: +45 3966 1065
mail: lohmann@tradehouse.dk
www.tradehouse.dk

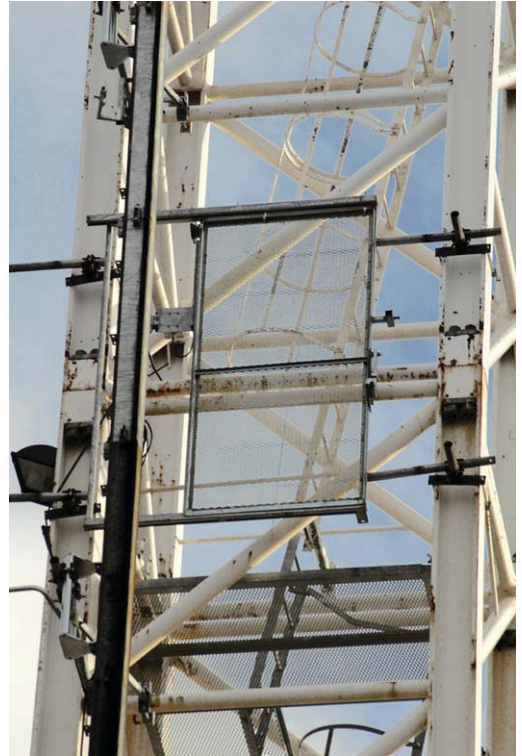
Description:

The hoist is suitable for quick transport of up to three people or 300 kg of material up to a height of 100 m. Hoists reaching heights over 100 m are available on request.

The hoist is ideal for installation in shipyards and on crane towers, road pylons, chimneystack, transmission towers, water towers, silos, refining towers etc.

Safety Devices:

- Emergency light
- Self braking motor
- Emergency parachute brake
- Double upper limit switch
- Lower limit switch
- Acoustic start signal
- Electric cut off key
- Emergency stop push button
- Manually operated emergency descent
- Enclosure door and cab door mechanically interlocked
- Safety switch on all doors



Landing gate at top position

Technical Features:

- Pay load 300 kg
- Speed rate 20 m/min
- Lifting height 100 m
- Self braking electric motor
- Main voltage 3 x 380 V
- Rated power 3 kW (4 HP)
- Secondary circuit 110 V
- Phase controller
- Electrical security lock
- Cab call at base
- Remote control for erection
- Cab size: L=1.3 m, W=1.0 m, H=2.3 m
- Square mast 150 mm
- Mast section height 1497 mm
- Mast section weight 32 kg
- Cabin automatic to base after 30 sec.

