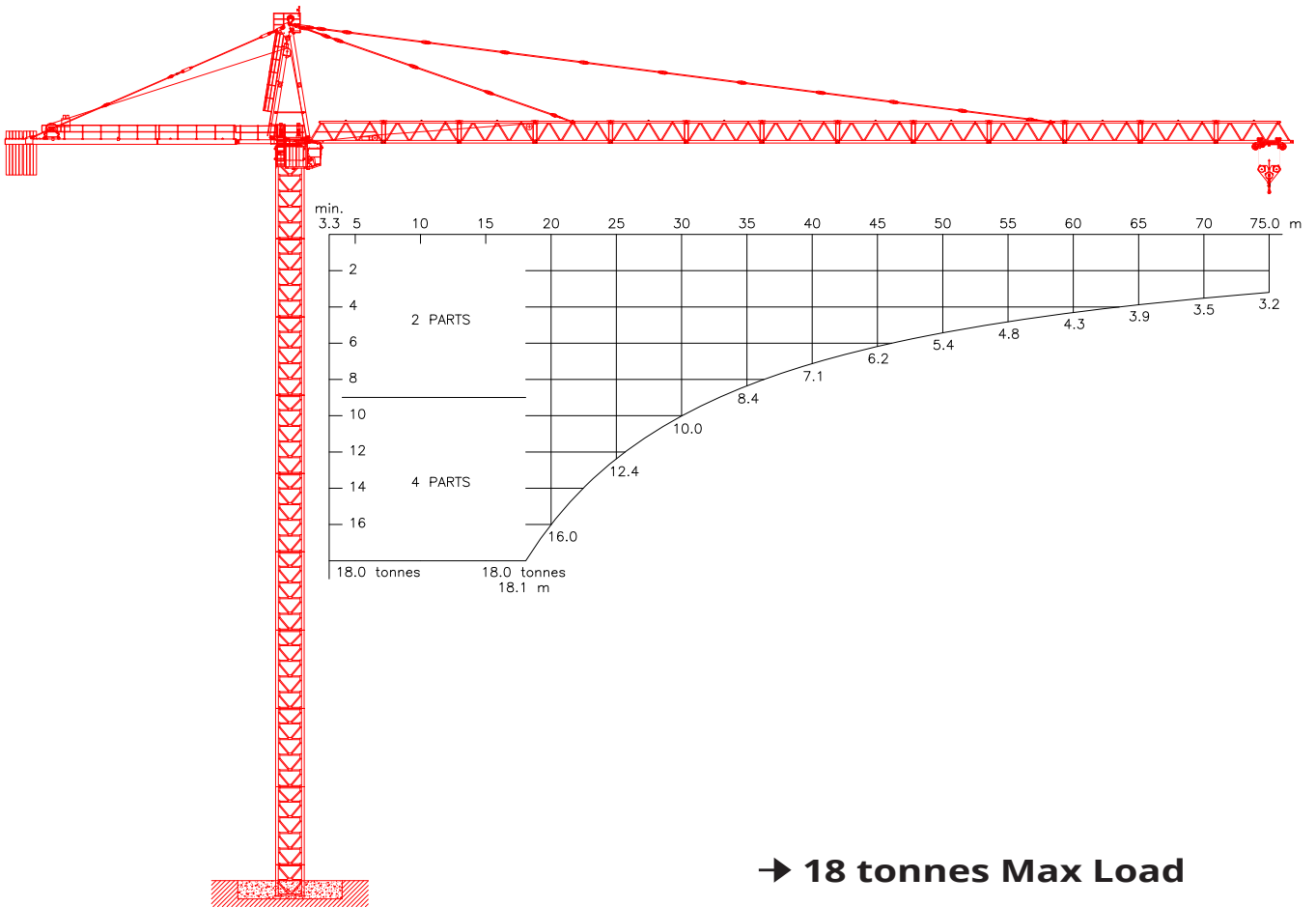




# KROLL CRANES



→ 18 tonnes Max Load

F.E.M 1.001-A3/E3

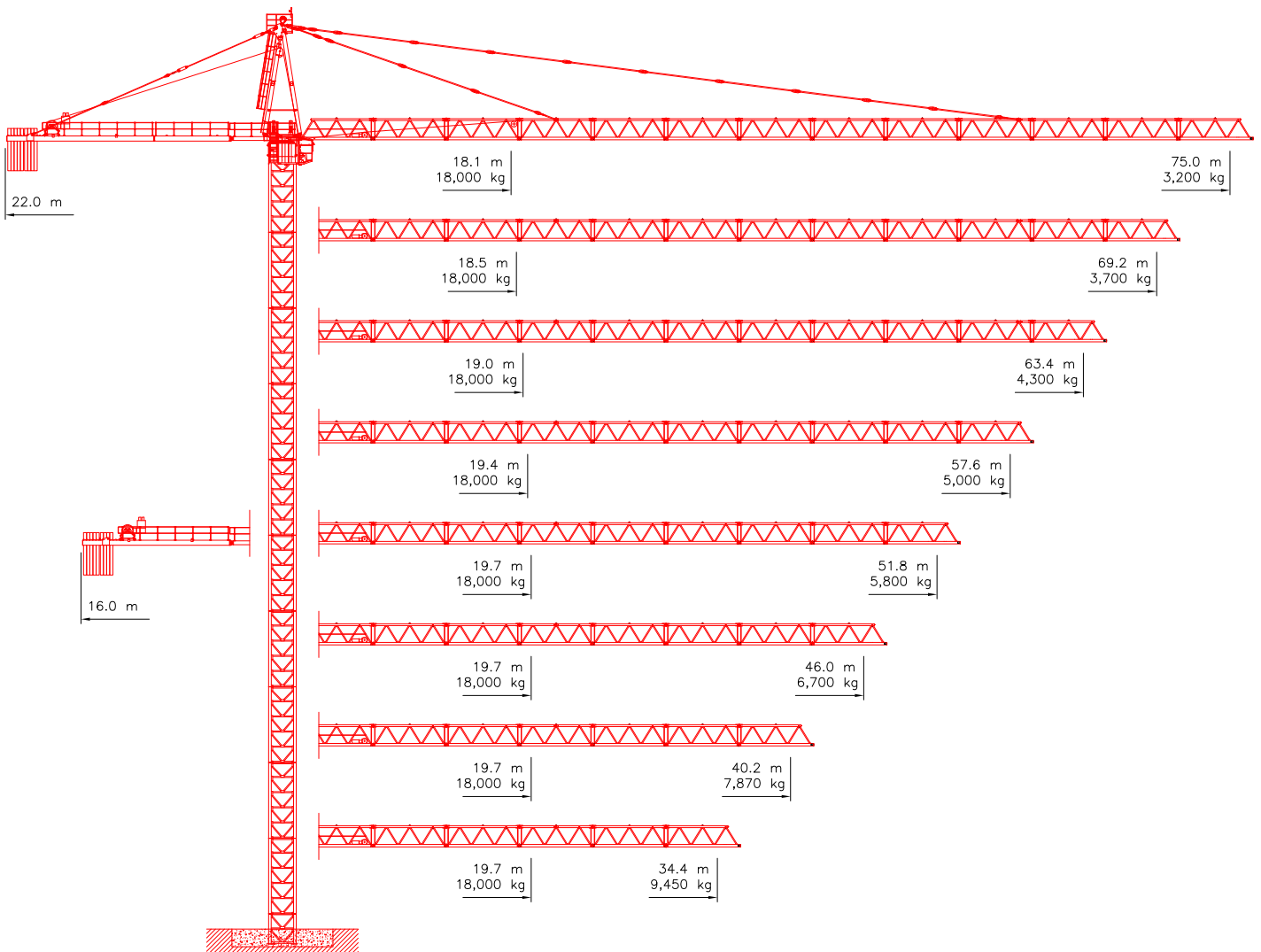


## HIGH TOP TOWER CRANE

# K320

18 tonnes Max



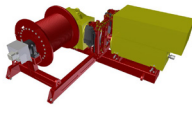
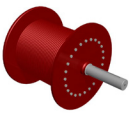
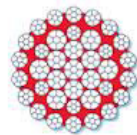

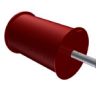
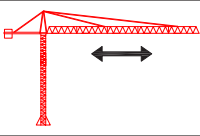


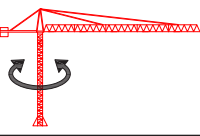


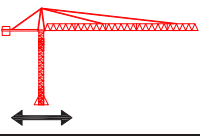
# JIB CONFIGURATIONS





# LOAD CHARTS

Radius	Jib Length															
	75.0 m		69.2 m		63.4 m		57.6 m		51.8 m		46.0 m		40.2 m		34.4 m	
	4 parts	2 parts	4 parts	2 parts	4 parts	2 parts	4 parts	2 parts	4 parts	2 parts	4 parts	2 parts	4 parts	2 parts	4 parts	2 parts
[m]	[kg]	[kg]	[kg]	[kg]	[kg]	[kg]	[kg]	[kg]	[kg]	[kg]	[kg]	[kg]	[kg]	[kg]	[kg]	[kg]
18.0	18,000	9,000	18,000	9,000	18,000	9,000	18,000	9,000	18,000	9,000	18,000	9,000	18,000	9,000	18,000	9,000
19.0	16,980	9,000	17,480	9,000	18,000	9,000	18,000	9,000	18,000	9,000	18,000	9,000	18,000	9,000	18,000	9,000
20.0	16,000	9,000	16,480	9,000	16,970	9,000	17,390	9,000	17,650	9,000	17,650	9,000	17,640	9,000	17,640	9,000
21.0	15,130	9,000	15,580	9,000	16,050	9,000	16,450	9,000	16,690	9,000	16,690	9,000	16,690	9,000	16,690	9,000
22.0	14,340	9,000	14,770	9,000	15,210	9,000	15,590	9,000	15,820	9,000	15,820	9,000	15,820	9,000	15,820	9,000
23.0	13,620	9,000	14,030	9,000	14,460	9,000	14,820	9,000	15,040	9,000	15,040	9,000	15,040	9,000	15,040	9,000
24.0	12,970	9,000	13,360	9,000	13,770	9,000	14,110	9,000	14,320	9,000	14,320	9,000	14,320	9,000	14,320	9,000
25.0	12,370	9,000	12,750	9,000	13,140	9,000	13,470	9,000	13,670	9,000	13,670	9,000	13,670	9,000	13,670	9,000
26.0	11,820	9,000	12,180	9,000	12,560	9,000	12,870	9,000	13,070	9,000	13,070	9,000	13,070	9,000	13,070	9,000
27.0	11,320	9,000	11,660	9,000	12,020	9,000	12,330	9,000	12,510	9,000	12,510	9,000	12,510	9,000	12,510	9,000
28.0	10,850	9,000	11,180	9,000	11,530	9,000	11,820	9,000	12,000	9,000	12,000	9,000	12,000	9,000	12,000	9,000
29.0	10,420	9,000	10,740	9,000	11,070	9,000	11,350	9,000	11,520	9,000	11,520	9,000	11,520	9,000	11,520	9,000
30.0	10,010	9,000	10,320	9,000	10,640	9,000	10,920	9,000	11,080	9,000	11,080	9,000	11,080	9,000	11,080	9,000
31.0	9,640	9,000	9,930	9,000	10,240	9,000	10,510	9,000	10,670	9,000	10,670	9,000	10,670	9,000	10,670	9,000
32.0	9,280	9,000	9,570	9,000	9,870	9,000	10,130	9,000	10,280	9,000	10,280	9,000	10,280	9,000	10,280	9,000
33.0	8,960	8,960	9,230	9,000	9,520	9,000	9,770	9,000	9,920	9,000	9,920	9,000	9,920	9,000	9,920	9,000
34.0	8,650	8,650	8,920	8,920	9,200	9,000	9,440	9,000	9,580	9,000	9,580	9,000	9,580	9,000	9,580	9,000
34.4	8,530	8,530	8,790	8,790	9,070	9,000	9,310	9,000	9,450	9,000	9,450	9,000	9,450	9,000	9,450	9,000
35.0	8,350	8,350	8,620	8,620	8,890	8,890	9,120	9,000	9,270	9,000	9,260	9,000	9,260	9,000	9,260	9,000
36.0	8,080	8,080	8,330	8,330	8,600	8,600	8,830	8,830	8,960	8,960	8,960	8,960	8,960	8,960	8,960	8,960
37.0	7,820	7,820	8,070	8,070	8,330	8,330	8,550	8,550	8,680	8,680	8,680	8,680	8,680	8,680	8,680	8,680
38.0	7,580	7,580	7,820	7,820	8,070	8,070	8,280	8,280	8,410	8,410	8,410	8,410	8,410	8,410	8,410	8,410
39.0	7,350	7,350	7,580	7,580	7,820	7,820	8,030	8,030	8,160	8,160	8,160	8,160	8,160	8,160	8,160	8,160
40.0	7,130	7,130	7,350	7,350	7,590	7,590	7,800	7,800	7,920	7,920	7,920	7,920	7,920	7,920	7,920	7,920
40.2	7,080	7,080	7,310	7,310	7,550	7,550	7,750	7,750	7,870	7,870	7,870	7,870	7,870	7,870	7,870	7,870
41.0	6,920	6,920	7,140	7,140	7,370	7,370	7,570	7,570	7,690	7,690	7,690	7,690	7,690	7,690	7,690	7,690
42.0	6,720	6,720	6,940	6,940	7,160	7,160	7,360	7,360	7,470	7,470	7,470	7,470	7,470	7,470	7,470	7,470
43.0	6,530	6,530	6,740	6,740	6,960	6,960	7,150	7,150	7,270	7,270	7,260	7,260	7,260	7,260	7,260	7,260
44.0	6,350	6,350	6,560	6,560	6,770	6,770	6,960	6,960	7,070	7,070	7,070	7,070	7,070	7,070	7,070	7,070
45.0	6,180	6,180	6,380	6,380	6,590	6,590	6,770	6,770	6,880	6,880	6,880	6,880	6,880	6,880	6,880	6,880
46.0	6,020	6,020	6,210	6,210	6,420	6,420	6,590	6,590	6,700	6,700	6,700	6,700	6,700	6,700	6,700	6,700
47.0	5,860	5,860	6,050	6,050	6,250	6,250	6,420	6,420	6,530	6,530						
48.0	5,710	5,710	5,900	5,900	6,090	6,090	6,260	6,260	6,370	6,370						
49.0	5,570	5,570	5,750	5,750	5,940	5,940	6,110	6,110	6,210	6,210						
50.0	5,430	5,430	5,610	5,610	5,800	5,800	5,960	5,960	6,060	6,060						
51.0	5,300	5,300	5,470	5,470	5,660	5,660	5,820	5,820	5,910	5,910						
51.8	5,190	5,190	5,370	5,370	5,550	5,550	5,710	5,710	5,800	5,800						
52.0	5,170	5,170	5,340	5,340	5,520	5,520	5,680	5,680								
53.0	5,050	5,050	5,220	5,220	5,390	5,390	5,550	5,550								
54.0	4,930	4,930	5,100	5,100	5,270	5,270	5,420	5,420								
55.0	4,820	4,820	4,980	4,980	5,150	5,150	5,300	5,300								
56.0	4,710	4,710	4,870	4,870	5,040	5,040	5,180	5,180								
57.0	4,600	4,600	4,760	4,760	4,930	4,930	5,070	5,070								
57.6	4,540	4,540	4,700	4,700	4,860	4,860	5,000	5,000								
58.0	4,500	4,500	4,660	4,660	4,820	4,820										
59.0	4,400	4,400	4,560	4,560	4,710	4,710										
60.0	4,310	4,310	4,460	4,460	4,620	4,620										
61.0	4,220	4,220	4,360	4,360	4,520	4,520										
62.0	4,130	4,130	4,270	4,270	4,430	4,430										
63.0	4,040	4,040	4,190	4,190	4,340	4,340										
63.4	4,010	4,010	4,150	4,150	4,300	4,300										
64.0	3,960	3,960	4,100	4,100												
65.0	3,880	3,880	4,020	4,020												
66.0	3,800	3,800	3,940	3,940												
67.0	3,730	3,730	3,860	3,860												
68.0	3,660	3,660	3,790	3,790												
69.0	3,580	3,580	3,710	3,710												
69.2	3,570	3,570	3,700	3,700												
70.0	3,520	3,520														
71.0	3,450	3,450														
72.0	3,380	3,380														
73.0	3,320	3,320														
74.0	3,260	3,260														
75.0	3,200	3,200														

<b>HOIST WINCH</b>  <b>MOTOR</b> 55 kW	<b>2-PARTS</b>		<b>4-PARTS</b>			
						
	Load	Max. Speed	Load	Max. Speed		
	0 - 1.0 t	128 m/min	0 - 2.0 t	64 m/min		
	1.0 - 3.5 t	72 m/min	2.0 - 7.0 t	36 m/min		
	3.5 - 9.0 t	32 m/min	7.0 - 18.0 t	16 m/min		
	<b>HOIST DRUM</b>			<b>HOIST WIRE</b>		
	<b>CAPACITY</b>			<b>Diameter</b>	18 mm	
430 m / 6 Layers		<b>Safety Factor</b>		5		
		<b>MBL</b>		220 kN		
	<b>TROLLEY WINCH</b>			<b>TROLLEY DRUM</b>		
	<b>MOTOR</b>			<b>CAPACITY</b>		
		7 kW		75 m / 1 Layer		
<b>TROLLEY SPEEDS</b>						
	0 - 18 t		0 - 70 m/min			
	<b>TROLLEY WIRE</b>					
			<b>Diameter</b>	9 mm		
		<b>Safety Factor</b>	6			
		<b>MBL</b>	65 kN			
	<b>SLEW DRIVE</b>			<b>POWER</b>		
	<b>Motor</b>			<b>SUPPLY</b>		
		2 x 7 kW		400 - 480 V, 50/60 Hz		
<b>SLEW SPEEDS</b>						
	0 - 18 t		0 - 0.6 rpm			
			<b>Consumption</b>	100 kVA		
		<b>Main Fuse</b>	100 A			
		<b>Recommended Generator Size</b>	250 kVA			
	<b>UNDERCARRIAGE</b>			<b>SUPPLY CABLE</b>		
	<b>Motor</b>			<b>Cable Length</b>		
		4 x 7 kW		0 - 175 m		
<b>TRAVEL SPEEDS</b>						
	0 - 18 t		0 - 25 m/min			
			<b>Cable Type</b>			
			4 x 25 mm <sup>2</sup>			
		4 x 35 mm <sup>2</sup>				
All motion controls are completely stepless ensuring smooth and jerk-free operation. Creeping speed down to 0.5% of maximum speed.			All specifications shown in the tables are for the standard version of K320. For special requirements regarding load charts or drive speeds, please contact Krøll Cranes A/S.			

F.E.M 1.001-A3/E3

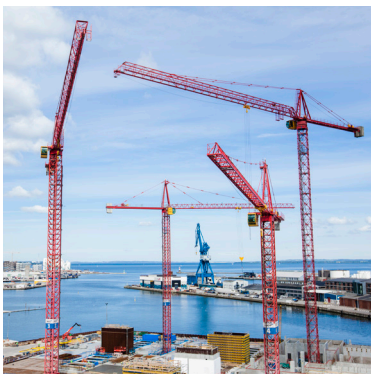
EN 14439:2009-C25



All data is subject to alteration.



## KRØLL CRANES



KRØLL CRANES A/S  
Nordkranvej 2  
DK-3540 Lyngø  
Denmark

Tel: +45 48 18 74 00  
Mail: [info@krollcranes.dk](mailto:info@krollcranes.dk)  
Web: [www.krollcranes.dk](http://www.krollcranes.dk)

